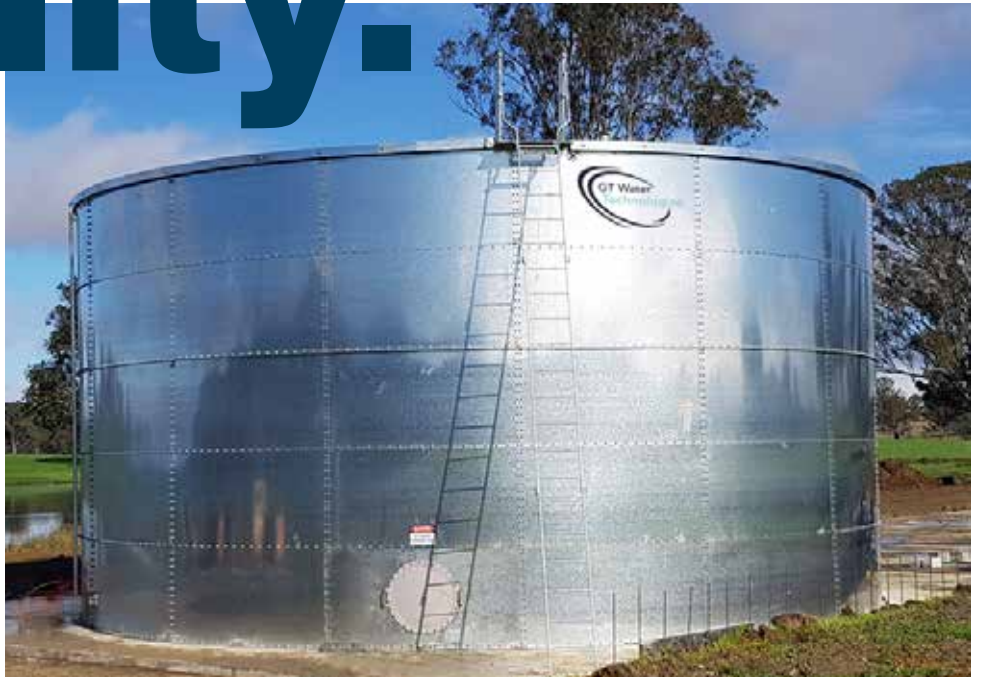


Innovative design. Superior quality.



“Our innovative designs result in higher quality tanks with fewer seams, built to any specific size you require in traditional cylindrical designs.”

We're all about reliability, longevity and the assurance of quality.

GT Water Technologies (part of Global Tanks Australia) manufactures top quality galvanised, stainless steel and powder-coated tanks for industries that require reliability, longevity and the assurance of quality. We design and build an infinite range of shapes and sizes of bolted steel tanks to suit site conditions and client needs. We specialise in complex applications such as thermal energy storage and customised designs for limited space and obstacles, as well as providing high quality liquid storage tanks.

We work closely with our customers from start to finish on even the most complex applications, and provide turn-key solutions; from foundations, to pipework, pumps, maintenance and repair. All our work is undertaken in compliance with the most current Australian Standards.

While GT Water Technologies ability to produce large-sized high-quality tanks is more suitable to water authority, mining and commercial undertakings requiring high-volume storage, our expertise in creating rectangular, obround and oddly-shaped tanks is of great interest to customers wishing to store potable water within commercial buildings or on residential properties.

Ideal for:

Agriculture

Aquaculture

Chilled water stratification

Fire protection

Mining and Utilities

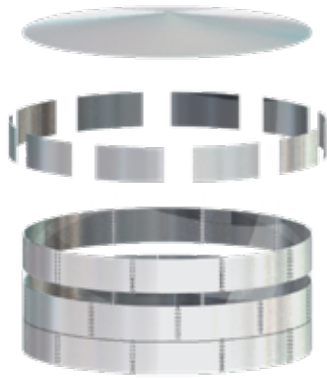
Potable Water

Water harvesting

Water treatment and storage

Tanks

**GT Water Technologies
innovative designs
provide outstanding
advantages in quality
and appearance.**



Traditional panel tank



Cylindrical tank

The advantages of our seamless wall sheets include:

- No manual lifting is involved; greatly reducing the risk of injury, keeping the site safer and documentation easier.
- Only a single seam is required to join the ring ends. This is easily concealed behind the level gauge, resulting not only in a more sound construction, but a more aesthetic one.
- While the size of a panel tank is restricted because its circumference must be a multiple of whole panels, one of our tanks can be made to any specific size, thus reducing costs by making the precise size required instead of defaulting to a tank size that is much larger than required.
- The tank is installed substantially faster than a panel tank would be, thanks to the unique method of transporting and dispensing the sheets, and a greatly reduced number of bolts.
- All seams face downwards, since each layer overlaps the layer below it. Therefore rain runs off the tank walls; keeping it cleaner and better protected from the elements, compared to panel tanks where water can often well in upwardsfacing seams

GT Water Technologies can design and install both liner and gasket tanks in a range of shapes and sizes, and in a variety of materials and coatings.



Coleraine 950kl clearwater storage tank with reinforced Aeon Liner and stainless steel roof



Mansfield 1000kl clearwater storage tank with reinforced Aeon Liner, shown with bare galvanised finish



PVC liner installation

GT Water Technologies can also manufacture a range of sizes and colours of traditional panel tanks. Panel tanks have the advantage of being able to be cost-effectively powder-coated or painted prior to installation.

Rectangular and Obround Tanks

Where space is very limited, such as a building basement, a rectangular tank that makes use of every corner can often be the best choice.

GT Water Technologies can design and install to fit in tight spaces and around obstacles such as columns and rafters.



Waratah Place rectangular tanks



Typical residential application

With rounded ends, the obround tank is simpler in construction than a rectangular tank, and is an excellent option when only a narrow strip of space is available.



Tennis Centre rectangular tank during construction, showing internal tie-bars and complete

Chilled Water Stratification

GT Water Technologies offers the unique ability to provide a complete solution to chilled water stratification tank needs.

That is, not only do we design and produce the tank, but we are alone among tank manufacturers in our ability to design and specifically tailor the flow-diffusing devices, which make the stratification of warm and cool layers possible and as such are the core components of the system.

The tanks are constructed using our superior and innovative tank design, instantly recognisable due to the absence of vertical seams; the wall sheets are joined only at each end of continuous steel sheet. Among the advantages of our patented design are a more sound construction and the ability to build a tank to any specific size you require.

What is a Chilled Water Stratification tank?

After the system discharges the cool water to the building, the returning warm water must be stored.

The remarkable aspect is that the cool water and warm water are stored in the same tank.

By engineering precise flow conditions using specially-tailored diffusing devices, the water in the tank is stratified into two distinct layers, separated by a thin transitional layer called a thermocline. The level of the thermocline rises as the tank is charged at night and descends during the day when the tank is discharged, but the overall water level stays the same.

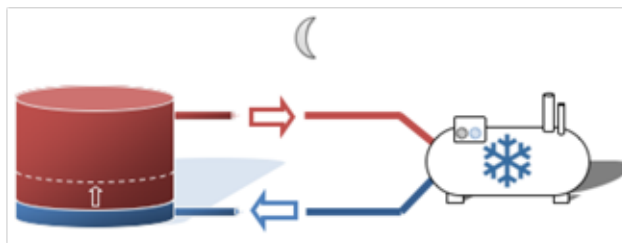
What is the purpose of Thermal Energy Storage?

By storing thermal energy during offpeak times, it is possible to drastically reduce energy requirements during peak hours.

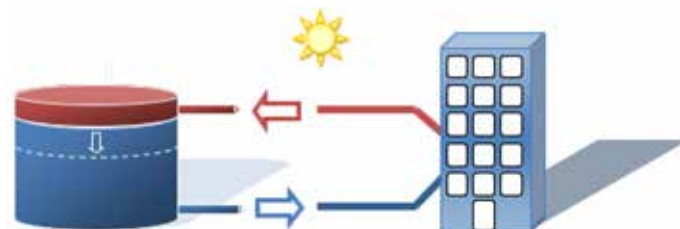
Chillers run at night to charge the thermal energy storage (TES) system with chilled water, which is then used in the building's air conditioning system during daytime peak hours.

Key advantages include:

- reduction of energy costs up to 40%
- reduction of capital and maintenance costs
- improvement of chiller efficiency
- improved system endurance under extreme heat conditions
- 15 Green Star Building credits available



The thermocline rises as the tank is charged with cool water from the chiller



During the day the thermocline stabilises dependent upon the outside temperature

For more detailed information ask us for our Chilled Water Stratification brochure, or visit www.gwtai.com.au

Services

GT Water Technologies provides a wide variety of services associated with maintenance, repairs, refurbishments as well as customer design. For more information, visit www.gwtau.com.au

- **Internal inspection**
- **Repairs and Retro-fits, Liner Replacement**
- **Large Diameter Tank extended life roofs and refurbishments**
- **Maintenance and Schedules**
- **Plumbing, pipework & pumps**
- **Footings & foundations**
- **Custom design**

Attention to quality

The outstanding quality of our tanks is a result of our innovative design combined with our attention to detail in creating excellent products.

The high quality of our tanks is just as important to us as it is to our customers.

GT Water Technologies tanks are installed only by our dedicated and experienced crews. This has real benefits for the end customer, because all our team members are committed to ensuring that our tanks are top quality not only in construction but also in installation.

All projects enjoy our careful attention to detail, and we take pride in the extra quality of our design. We take care of the details that customers shouldn't need to worry about.

Australian Standards Compliance

GT Water Technologies structures comply with various industry-recognised Australian Standards and American Water Works Association standard.

Codes and Standards include:

AS2304-2011	Water storage tanks for fire protection
AS2419.1-2005	Fire hydrant installation – system design installation and commissioning
AS1657-1992	Fixed platforms walkways stairways and ladders – Design construction and installation
AS3500	Plumbing & Drainage
AS2118.1-2006	Automatic fire sprinkler system – general systems
AS/NZS1170.0-2002	Structural design actions – General principals
AS/NZS1170.1-2002	Structural design actions – Permanent, imposed and other actions
AS/NZS1170.2-2011	Structural design actions – Wind loads
AS/NZS1170.4-2011	Structural design actions – Earthquake loads
AS/NZS4100-1998	Steel structures

Visit www.gwtau.com.au for more information.

Get in touch for more information.

T 03 8595 3210 or visit our websites

www.global-tanks.com.au and www.gwtau.com.au

GT Water Technologies
(part of Global Tanks Australia Pty Ltd)
Factory 28, Cavehill Industrial Gardens Estate
Beresford Road
Lilydale VIC 3140

T 03 8595 3210 | E sales@gwtau.com.au

