

ROTO-JET®

High Pressure Pitot Tube Pumps

Excellent
Engineering
Solutions



Model RG 3x2®
Grease Lubricated

High Pressure Single-Stage, Centrifugal Pump With Advanced Pitot Tube Technology

Advanced Design

- High pressure without high speed
- Flexible - performance can be adjusted by changing the pitot tube
- Simple - only two basic working parts

Dependable performance

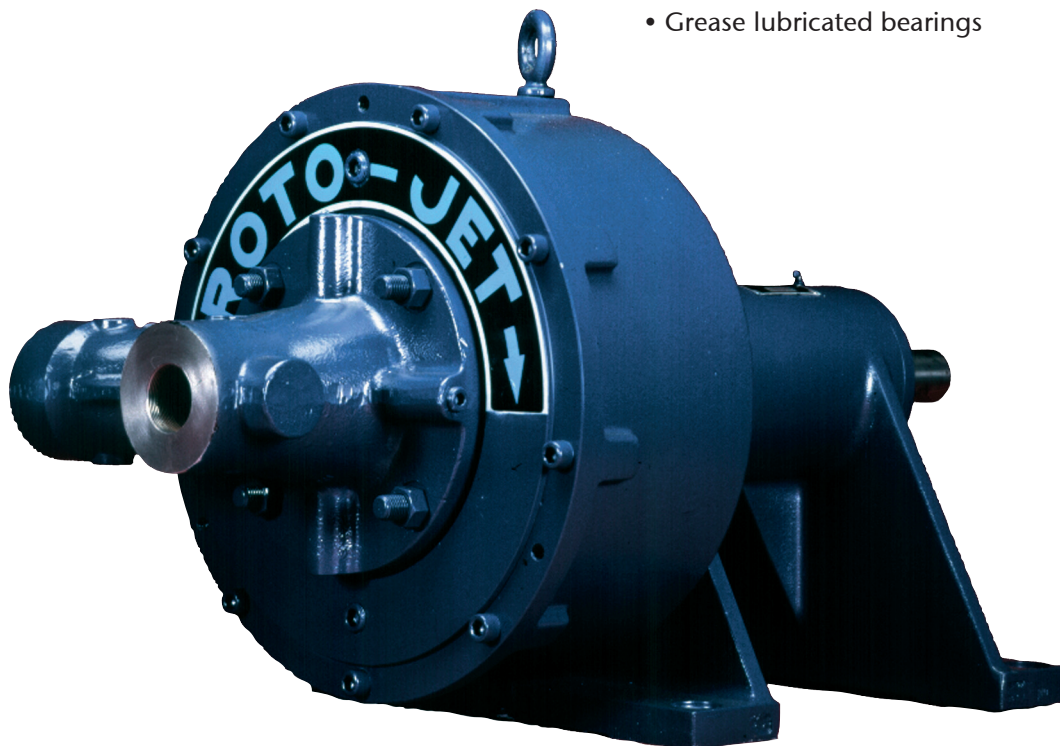
- Hydraulically stable along the entire performance curve and beyond BEP
- Low minimum flow requirement
- Rugged design - most reliable high pressure pump in the marketplace

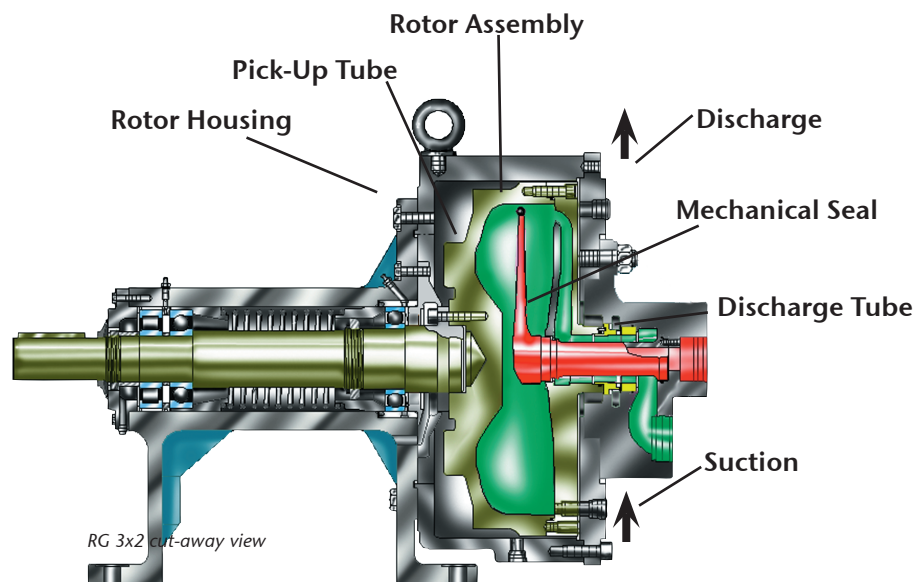
Enhanced Reliability

- Smooth, pulsation-free flow
- Low pressure mechanical seal is easily maintained
- Isolated bearing pedestal to minimize risk of bearing contamination

RG 3x2® Pump Features

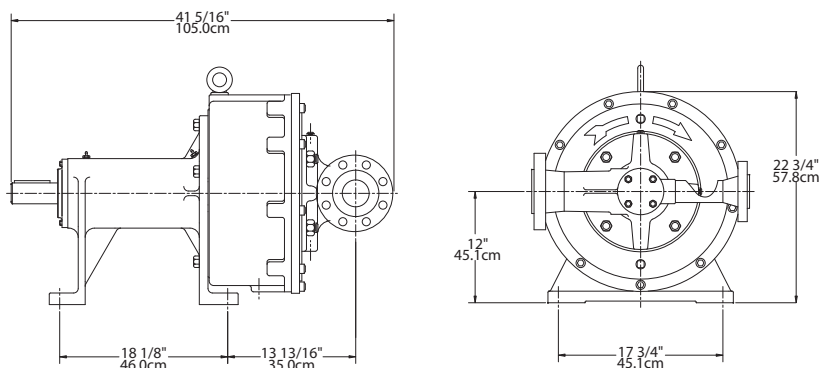
- Materials of construction: ductile iron, carbon steel, stainless steel, CA6NM, and CD4MCu.
- Single or double mechanical seal
- Threaded or flanged connections
- Grease lubricated bearings





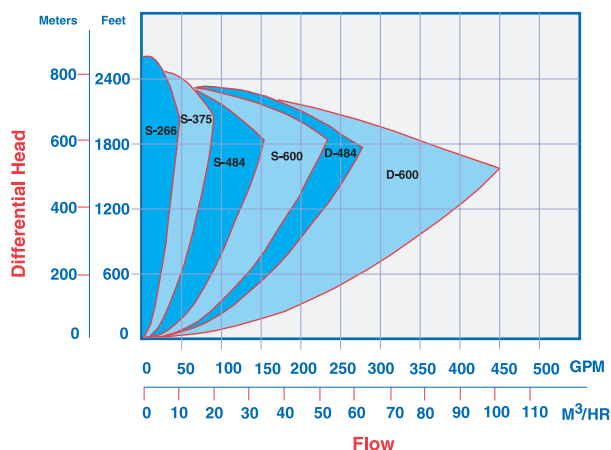
Typical Roto-Jet Model RG 3x2® Applications

- Food and Beverage cleaning systems
- Reverse osmosis systems
- Automotive gun drilling coolant
- Spraying/washing systems
- High pressure paper shower
- Circuit board wash systems
- Water/process injection systems
- Seal flushing systems
- Boiler feed/cleaning systems
- And many, many more...



Note: Dimensions are for general reference only and will vary with actual model selected.

Operating Range



Specifications		RG 3x2®	
Maximum Temperature (With Flush)	180° F 250° F	180° F 250° F	82° C 121° C
Maximum Suction Pressure	200 PSI	200 PSI	14 BAR
Maximum Head	2600 Ft.	2600 Ft.	792 m
Maximum Speed	4380RPM	4380RPM	4380 RPM
Maximum Flow	400 GPM	400 GPM	91 m³/hr
Maximum Horsepower	400 HP	400 HP	300 KW
Weight	870 lbs.	870 lbs.	395 kg
Lubrication	grease	grease	grease
Materials of Construction			
Rotor	St. Steel	St. Steel	Ductile Iron
Rotor Cover	316 St. Steel	316 St. Steel	Ductile Iron
Manifold	316 St. Steel	316 St. Steel	Ductile Iron
Endbell	Ductile Iron	Ductile Iron	Ductile Iron
Pickup Tube*	17-4 PH	17-4 PH	17-4 PH
Shaft	AISI 4140	AISI 4140	AISI 4140

*Also available in 718 Inconel.

Weir Specialty Pumps

440 West 800 South Tel: 1 801 359 8731
P.O. Box 209 (84110-0209) Fax: 1 801 530 7828
Salt Lake City, UT 84101 email: info@weirsp.com
USA www.weirsp.com

© 2012 Weir Specialty Pumps. All Rights reserved. Bulletin RJ-RG3X2

AUSTRALIAN DISTRIBUTOR



CALL 1300 789 466
When Pump Knowledge Matters
www.kelairpumps.com.au

Excellent
Engineering
Solutions

