



TRUFLO[™]
QUALITY • VALUE • SERVICE



**A New Vision
for Quality Pumps**

TSP
Series

*API 610 Process Pump
11th Edition*

TSP Series

API 610 Process Pump, 11th Edition

The **Truflo TSP Series** pump is the new standard for worldwide process needs. From the petroleum to the power and mining industries, all customers will come to see why the **TSP Series** overhung pump adds value, reliability and safety at user facilities. A wide range of applications and options, including inducers for low NPSHa systems, show why the **TSP Series** is an industry leader. The **Truflo TSP Series**

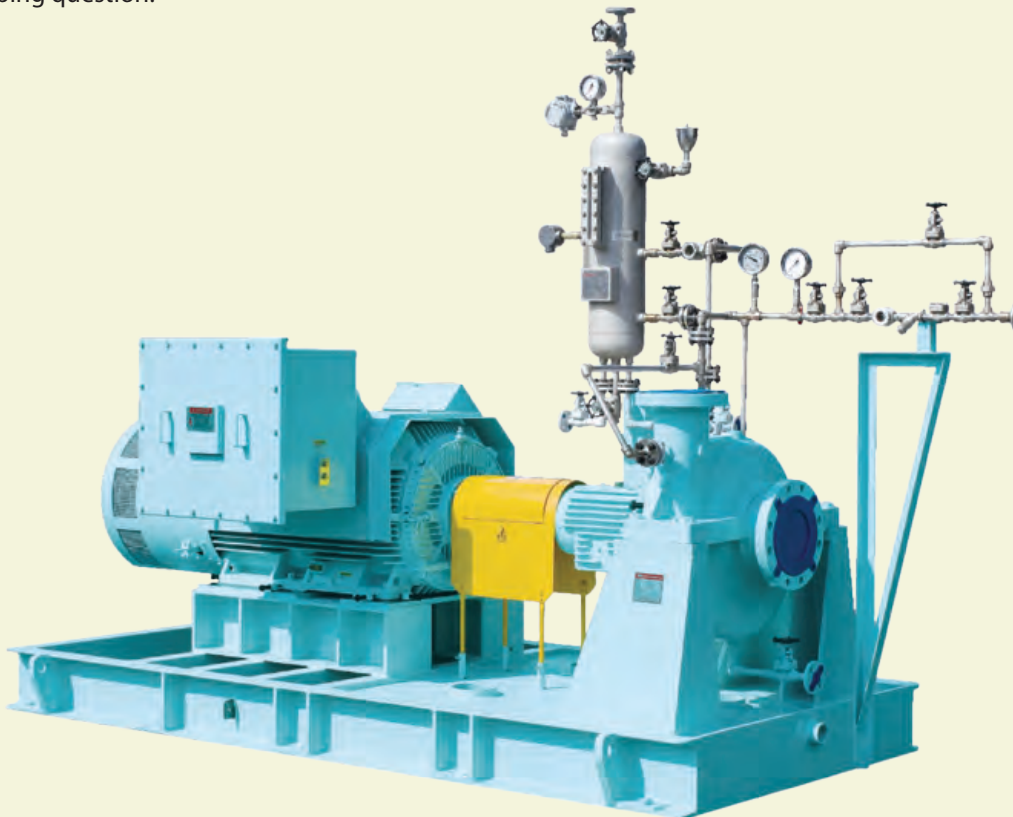
also comes standard with many options not available from other industry leaders, including all investment casted enclosed impellers. Available in 33 sizes and casing configurations, all material combinations and better than industry standard deliveries, let the **Truflo TSP Series** be your answer to you next pumping question.

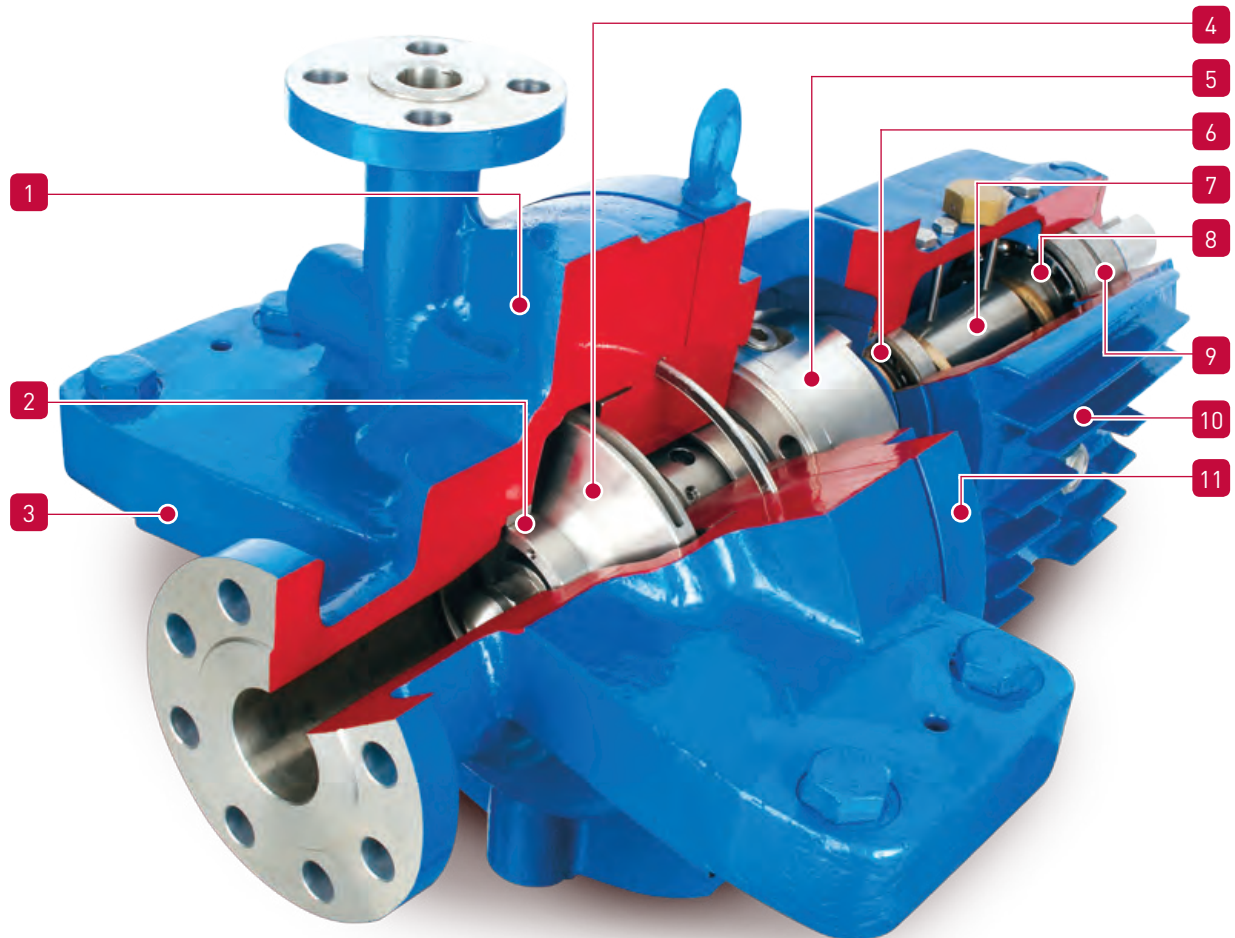
FEATURES

- ⚙️ API 610 11th Edition compliant
- ⚙️ 33 sizes available
- ⚙️ Maximum capacity: 8365 gpm
- ⚙️ Enclosed impeller (investment casting)
- ⚙️ Excellent interchangeability
- ⚙️ 1200 maximum allowable working pressure
- ⚙️ Standard double volute on greater than 3" suction

APPLICATIONS

- ⚙️ Oil and gas production
- ⚙️ Refining and pipeline
- ⚙️ Power generation
- ⚙️ Mining





1. CASING

- Designed to meet API 610 11th edition.
- Standard 300# RF flanges.
- Tangential discharge for hydraulic efficiency.
- Standard dual volute design for 3 inch discharge or larger.

2. RENEWABLE WEAR RINGS

3. CASING & CENTERLINE MOUNT SUPPORT

- Designed to meet API nozzle load criteria.

4. IMPELLER

- Standard enclosed impeller for high efficiency.
- Investment casting for better efficiency and low NPSH characteristic.
- Balance grade: ISO G1.0.

5. SEAL CHAMBER

- Designed to meet API 610 & API 682 standards.

6. DEFLECTOR & LABYRINTH OIL SEAL

- Standard deflector & labyrinth oil seal applied with non-sparking material.

7. SHAFT

- Heavy duty shaft design guarantees minimum shaft deflection and maximum bearing and mechanical seal life.

8. OIL RING

- Standard oil ring provides better bearing lubricating condition.
- Other configurations available.

9. BEARING

- Duplex angular contact thrust bearings and deep-groove radial vbearings to meet API 610 requirements.

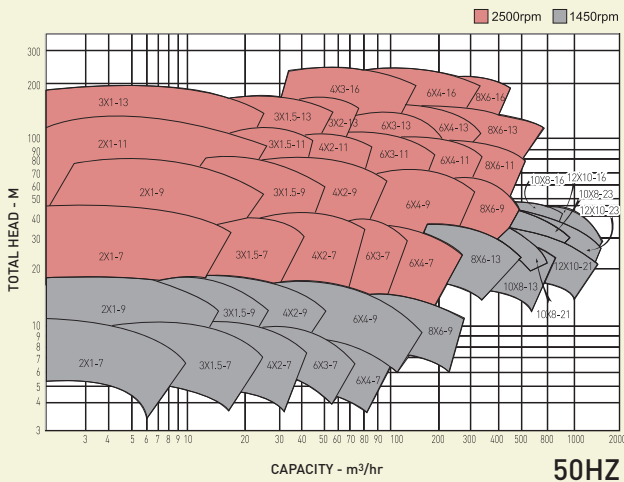
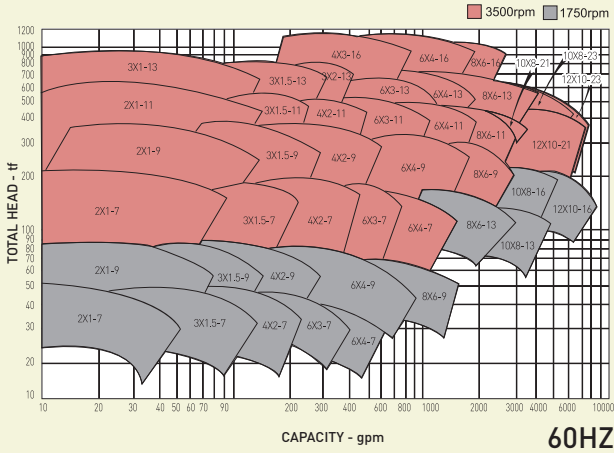
10. FINNED FRAME

- Standard cast finned frame provides natural air cooling.
- Optional cooling fan improves the cooling condition.

11. BEARING FRAME

- Rigid design provides better vibration characteristics.
- 3 bearing frames cover all TSP models.
- Metal to metal fits provide runouts and concentricities well within API 610 limits.

Performance Curves & Dimensions



Group	Pump size	Nozzle Size		A	L	C	H1	H2	B
		SUC	DIS						
S	2x1-7	2	1	151	603	127	330	254	97
	3x1.5-7	3	1.5	165	615	127	330	254	116
	4x2-7	4	2	167	620	127	330	279	127
	6x3-7	6	3	180	625	127	330	286	141
	8x4-7	6	4	184	619	127	330	267	151
	2x1-9	2	1	174	610	127	330	254	128
	3x1.5-9	3	1.5	181	613	127	330	260	139
	4x2-9	4	2	190	612	127	330	286	148
	6x4-9	6	4	197	615	127	362	273	186
	8x6-9	8	6	215	693	127	394	330	206
T	2x1-11	2	1	173	609	127	330	279	145
	4x2-11	4	2	190	680	127	362	318	167
	6x3-11	6	3	181	687	127	362	324	193
	8x4-11	6	4	199	690	127	394	305	209
	8x6-11	8	6	215	689	127	394	330	224
	3x1-13	3	1	204	683	127	362	311	162
	3x1.5-13	3	1.5	209	684	127	362	311	162
	3x2-13	3	2	213	688	127	362	337	184
	6x3-13	6	3	225	621	127	394	343	217
	6x4-13	6	4	223	694	127	394	330	227
L	8x6-13	8	6	261	701	178	457	457	264
	10x8-13	10	8	229	698	178	508	343	284
	4x3-16	4	3	225	783	127	457	457	227
	6x4-16	6	4	251	787	127	457	457	253
	8x6-16	8	6	284	787	178	457	457	297
	10x8-16	10	8	286	795	178	508	508	318
	12x10-16	12	10	304	804	178	584	584	347

AUSTRALIAN DISTRIBUTOR



CALL 1300 789 466

When Pump Knowledge Matters
www.kelairpumps.com.au

These diagrams are for reference only and subject to change without prior notice. Please consult factory for exact performance curves.

Call for information on the full line of TRUFLO® pumps



7105 Cessna Drive, Greensboro, NC 27409
Phone: 800-789-1864 • Fax: 336-664-1353
E-mail: sales@truflo.com • Web: www.truflo.com