

UNIVERSAL PRODUCT LINE

SERIES: 127A, 4127A, 327A, 4327A

STAINLESS STEEL CONSTRUCTION

FEATURES & BENEFITS

- All stainless steel construction for corrosion resistance over a wider pH range
- Non-galling gear materials available for handling thin liquid applications
- Enhanced bearing housing allows easy installation of packing, component and most cartridge mechanical seals without modification



Component Seal

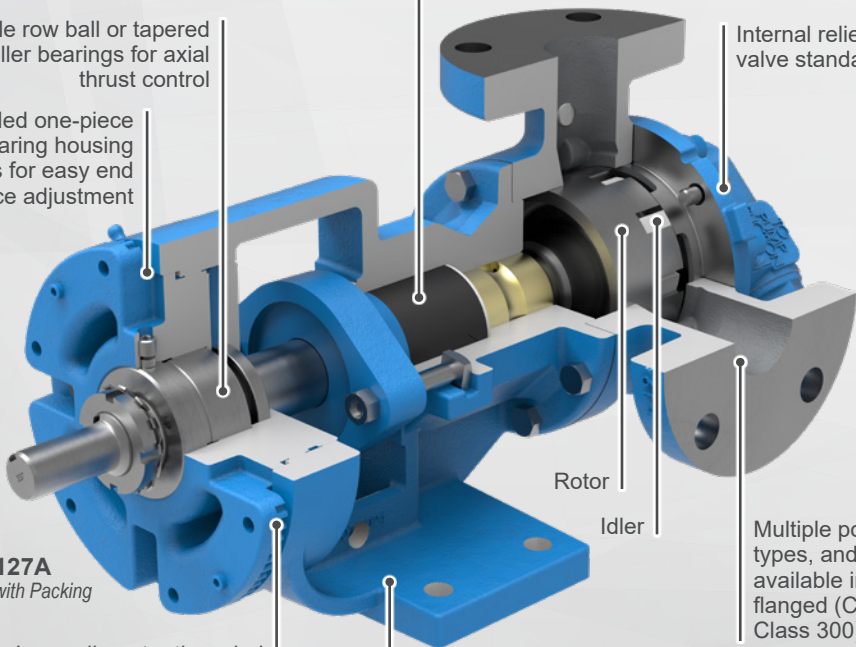
Cartridge Seal

Seal chamber accepts packing and a variety of component and cartridge style mechanical and lip seals, in both single and double mechanical seal configurations

Double row ball or tapered roller bearings for axial thrust control

Threaded one-piece bearing housing allows for easy end clearance adjustment

Internal relief valve standard*



Rotor

Idler

Multiple port sizes, types, and ratings are available including flanged (Class 150, Class 300)

H127A

Shown with Packing

Large diameter threaded bearing housing allows easy removal of cartridge seals

One-piece cast bracket with seal between bearings provides rigid foundation to maximize seal and bearing life



CAPACITY

to 1,600 GPM
(363 m³/h)



PRESSURE

to 200 PSI
(14 BAR)



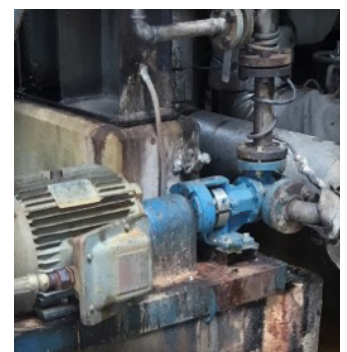
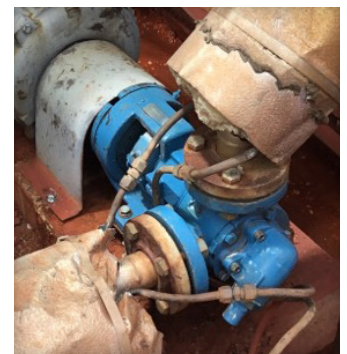
TEMPERATURE

-120°F to +500°F
(-85°C to +260°C)



VISCOSITY

28 to 2,000,000 SSU
(0.1 to 440,000 cSt)



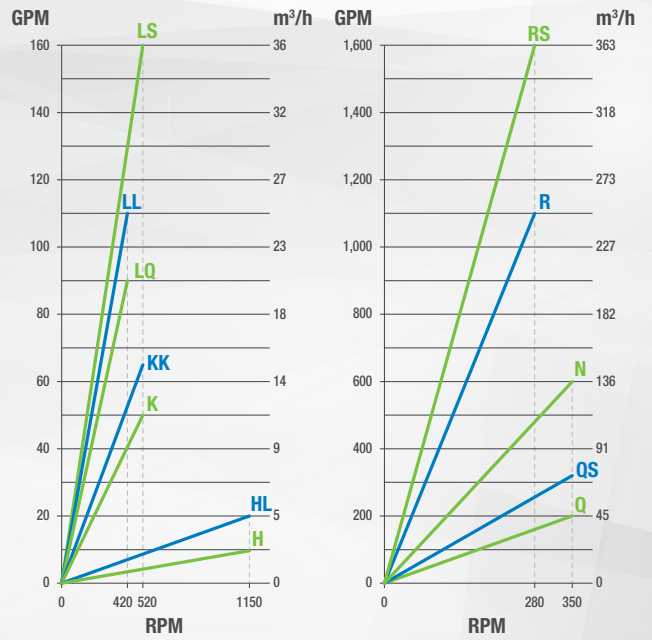
VIKING PUMP®

* RS size is standard with jacketed head, no valve.

PERFORMANCE

MODELS		SPECIFICATIONS				
Non-Jacketed		Performance			Standard Ports	
Packed Gland	Mechanical Seal	Max Speed, RPM	GPM	m³/h	Size, Inches	
					Type	Type
H127A	H4127A	1150	10	2.3	1.5	Flange
HL127A	HL4127A	1150	20	4.5	1.5	Flange
K127A	K4127A	520	50	11	2	Flange
KK127A	KK4127A	520	65	15	2	Flange
LQ127A	LQ4127A	420	90	20	2.5	Flange
LL127A	LL4127A	420	110	25	3	Flange
LS127A	LS4127A	520	160	36	3	Flange
Q127A	Q4127A	350	200	45	4	Flange
QS127A	QS4127A	350	320	73	6	Flange
N327A	N4327A	350	600	136	6	Flange
R327A	R4327A	280	1,100	250	8	Flange
RS327A	RS4327A	280	1,600	363	10	Flange

CURVES



PORTING

- Right Angle (90°) (Rotatable Casing), H-Q
- Opposite (180°) (Rotatable Casing), QS-RS
- Flanged (ANSI)

SEALING

- Packing
- Component Mechanical Seal
- Cartridge Mechanical Seal
- Cartridge Triple Lip Seal

MOUNTING

- Foot Mount

OPTIONS

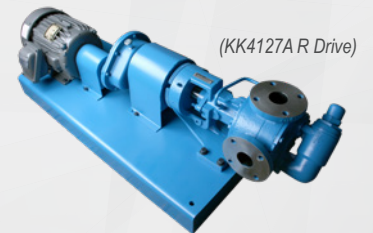
- Jacketing (Series 227A, 4227A)

DRIVES

- Ⓡ Offset Gear Reducer Drive
- Ⓟ Purchased Gear Reducer Drive
- ⓓ Direct-Mounted Drive (H, HL)
- Ⓥ V-Belt Drive

LIQUIDS

- Soaps, Detergents & Surfactants
- Acids & Caustics
- Water-based Liquids
- Vegetable Oil
- General Chemicals



VIKING PUMP®

VIKING PUMP, INC.
 A Unit of IDEX Corporation
 406 State Street
 Cedar Falls, Iowa 50613 U.S.A.
vikingpump.com

Contact Your Stocking Distributor Today

Distributed By:

AUSTRALIAN DISTRIBUTOR



KelairPumps

CALL 1300 789 466

When Pump Knowledge Matters
www.kelairpumps.com.au

United States
vikingpump.com

Cedar Falls, Iowa
 Phone: (319) 266-1741

Canada
vikingpumpcanada.com

Windsor, Ontario
 Phone: (519) 256-5438

Europe & Africa
vikingpump.com

Shannon, Ireland
 Phone: +353 (61) 471933

Asia-Pacific
idexfmt-asia.com

China - Shanghai
 Phone: +86-21-5241-5599
 India - Mumbai
 Phone: +91-22-6643-5563
 Singapore
 Phone: +65-6684-7305

Middle East
vikingpump.com

Dubai, UAE
 Phone: +971 4 2600300

Latin America
vikingpump.com

Australia & New Zealand
vikingpump.com

