



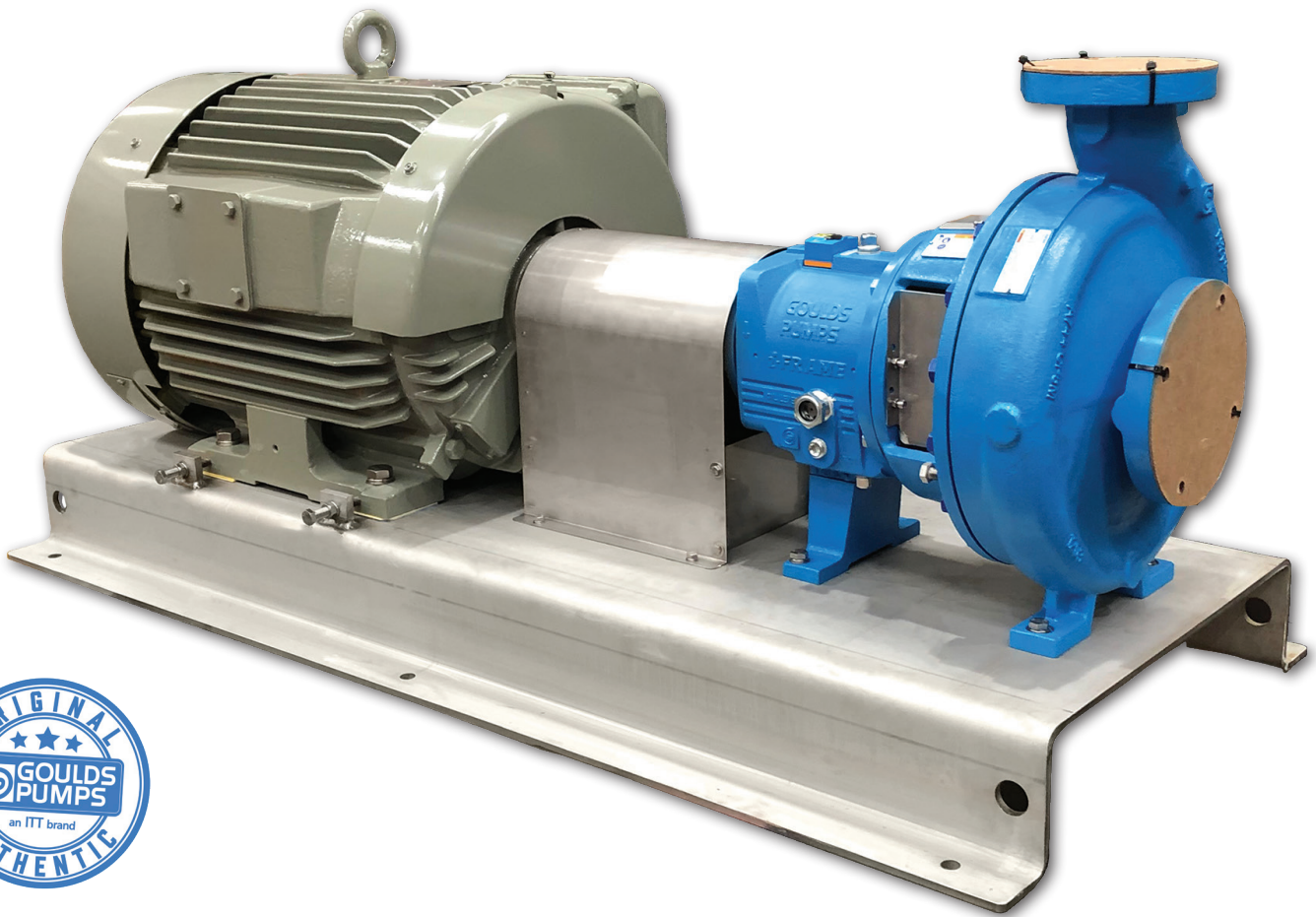
KelairPumps

CALL 1300 789 466

GOULDS PUMPS 3196 ANSI Process Pump

WHEN PUMP
KNOWLEDGE
MATTERS

You can make no better choice than the best.



A world-class pump line built to ANSI standards.

The Goolds 3196 ANSI Standard Dimension Process Centrifugal Pump immediately became the standard in the industry when it was first introduced in 1961. Today, the number of installations attest to its remarkable performance.

Chemical, petrochemical, pulp and paper, primary metals, food and beverage and general industries know they can make no better choice than the best - Goolds Model 3196.



SPECIFICATIONS

- Capacities to 1590 m³/h
- Heads to 223 m
- Temperatures to 371°C
- Pressures to 26 bar

KELAIR PUMPS AUSTRALIA - 1300 789 466

When Pump Knowledge Matters

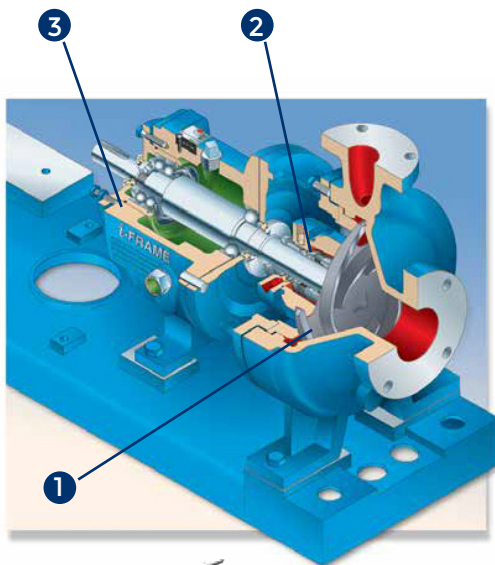
FEATURES

- INPRO VBXX-D Hybrid Labyrinth Seals
- Premium Severe-Duty Thrust Bearings
- Heavy Duty Shaft and Bearings
- Optimized Oil Sump Design
- One Inch Bull's Eye Sight Glass
- i-FRAME Power End
- Magnetic Drain Plug
- Heavy Walled Casing
- Fully Open, Adjustable Impeller
- Patented Taper Bore Plus Seal Chamber
- Sealing Flexibility
- Rigid Frame (and Casing) Feet



BEFORE SELECTING A PROCESS PUMP...

Consider these design features for extending pump performance



1. Impeller

Must be designed for long-term, maintainable performance and minimum hydraulic loads for maximum reliability.

2. Seal Chamber

Must be designed for favorable seal environment – proper heat dissipation and lubrication of seal faces. The design must also be able to handle tough services: liquids containing solids, air or vapors.

3. Power End

Must be designed for optimum bearing life, effective oil cooling, and minimum shaft deflection. Onboard condition monitoring provides early warning of potential failures, before they occur.



FULLY OPEN IMPELLER

Best design for the Chemical Process Industries services. Ideally suited for corrosives and abrasives, handles solids and stringy fibers with ease. Allows for simple restoration of clearances when wear takes place. Back pump-out vanes reduce pressure on the shaft seal, reduce axial thrust on the bearings.

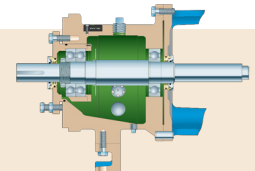


ENGINEERED SEAL CHAMBERS

BigBore™ and TaperBore™ PLUS seal chambers allow seals to run cooler with better face lubrication. Keep solids, air and vapors away from the seal faces for extended seal life.



— An ITT Brand



i-FRAME® POWER ENDS

Patented design maximizes reliability and Mean Time Between Failure (MTBF). Severe-duty bearings increase bearing life 2-5 times, while onboard condition monitor gives visible indication of general pump health. Backed by a five-year standard warranty.

We know the importance of choosing the right equipment to match your process. Whatever your pump requirements, we will help you achieve the best pumping solution.

When Pump Knowledge Matters

KELAIR PUMPS AUSTRALIA - 1300 789 466 - www.kelairpumps.com.au

INDUSTRIAL PUMPS | BUILDING & FIRE | ENVIRONMENTAL | SERVICE

NSW | VIC | TAS | QLD | WA