



KelairPumps

CALL 1300 789 466

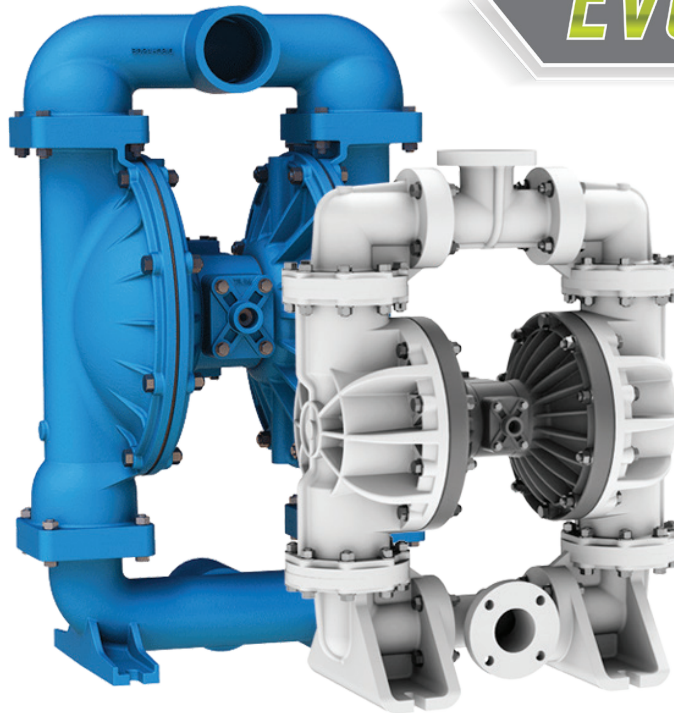
EVOLUTION SERIES  
STANDARD DUTY AODD PUMPS

WHEN PUMP  
KNOWLEDGE  
MATTERS

Optimized performance without  
sacrificing proven reliability.

**EVOLUTION**

**SANDPIPER**  
A WARREN RUPP, INC. BRAND



Sandpiper has long been a leader in the AODD market, using the application of advanced engineering methods, Sandpiper has improved upon the trusted and proven product designs of their Standard Duty pumps creating the EVOLUTION Series.

Sandpiper's unique combination of best-in-class max flow rates and lowest air consumption makes the Evolution Series the most efficient and economical pumps available.

- **Max flow rate:** The S20 is the world leader in maximum flow rate, with up to 32% higher capacity, allowing you to get your work done faster.
- **Air consumption:** The S30 requires up to 56% less air to operate, reducing the load on your compressed air system and lowering operating costs.
- **Air economy:** Sandpiper's metallic standard-duty pumps provide up to 2.5 times more gallons out for every cubic foot of air supplied.
- **Annual savings:** Sandpiper's metallic standard-duty pumps will save you on annual operating costs.

KELAIR PUMPS AUSTRALIA - 1300 789 466

*When Pump Knowledge Matters*

## WHAT IS EVOLUTION?

Evolution means optimized performance without sacrificing proven reliability. These pumps have undergone an engineering evolution, leveraging trusted and proven product designs to improve their performance by application of advanced engineering methods.

Large air operated diaphragm pumps use a significant amount of air. The only way to reduce air consumption is to throttle the air supply and reduce potential performance or to build a more efficient pump, Sandpiper has chosen the later.

To achieve this Sandpiper has changed the air chamber design to make the most of the air entering the pump, so every stroke now utilizes less air volume to fill the chamber to shift the pump, which increases the pump's efficiency.

This all happens without complex valves or choke points, rather it is simply a better designed pump. To complement this, the liquid valve area has been redesigned to achieve higher flow rates

## FEATURES & BENEFITS

- Able to dry run without damage to the pump or system.
- Pumps solids laden fluids without damage to the pump or product.
- Self Priming, able to suction lift.
- Deadheads safely with damaging the pump or product.
- Shear sensitive, does not shear or separate the product being pumped.
- No electricity, so intrinsically safe operation, can be grounded.
- Can be used in submerged operation.
- Sealless design, no seals or packing.
- Able to achieve variable flow and head without sophisticated controls.
- Bolted design for leakage free operation.

## EVOLUTION vs. The Competition

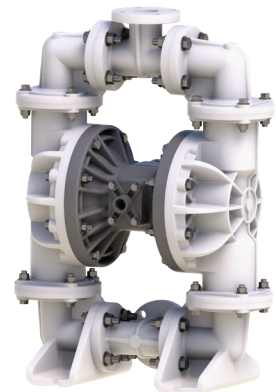
How does Sandpiper measures up against its competitors?  
Evolution beats the competition:

- Up to 32% higher max flow rate
- Up to 67% less air consumption
- Up to 3x time better air economy
- 5 minute pilot valve repair / replace vs. 55+ minutes for most competitors



**S20 & S30 Metallic Models**

- Increased maximum flow rate
- Lowered air consumption
- Improved efficiency



**S30 Non - Metallic Model**

- All Polypropylene or PVDF (Kynar) wetted construction
- All Polypropylene and Stainless
- Steel non-wetted construction
- Better portability than the previous version - 24% lighter

# EVOLUTION

Wherever you see this badge, these pumps have gone through Sandpiper's Evolution performance improvement. Watch for more engineering evolutions to come in the near future!

We know the importance of choosing the right equipment to match your process. Whatever your pump requirements, we will help you achieve the best pumping solution.

*When Pump Knowledge Matters*