

## Lightnin GP2

### GENERAL PURPOSE MIXER

The SPX FLOW Lightnin GP2 Mixer is designed for lab and industrial applications. The Lightnin GP2 mixer has an integrated digital control and feedback system that allows the user to precisely and easily control the mixing process. This coupled with Lightnin Impeller configuration knowhow, produces consistent results that is critical for validation and scale up.

**“SPX FLOW Lightnin Mixing know how for process validation and high value process applications”**

**Ideal for simple blending, solids suspension, high-viscosity and gas-liquid applications.**

Designed for **open tank applications**, the Lightnin GP2 is Multifunctional, Reversing and comes with a Countdown Timer.

- Brushless DC motor – reduced maintenance.
- Automatic overload protection - increased life
- Variable speed from 40 – 2000 rpm
- Torque 100Ncm (9 in-lbs.)
- .07KW (1/10HP)
- Through Stainless Steel Ø10mm (Ø3/8") Shaft
- Rod and Universal Clamping configurations
- Clockwise and counter clockwise rotation
- Countdown timer - mixing stops when time is completed
- Low energy LED mixing light
- Global availability, with UL, CSA, CE, RoHS certification, WEEE compliance and IP42 rating

- Adjustable Ø10mm (Ø3/8") shaft with one end turned down to Ø8mm (Ø5/16") – non retrofit models
- A310 64mm, (2.5") and A310 86mm, (3.4") impellers as standard – non retrofit models



#### LIGHTNIN GP2 - SPECIFICATIONS

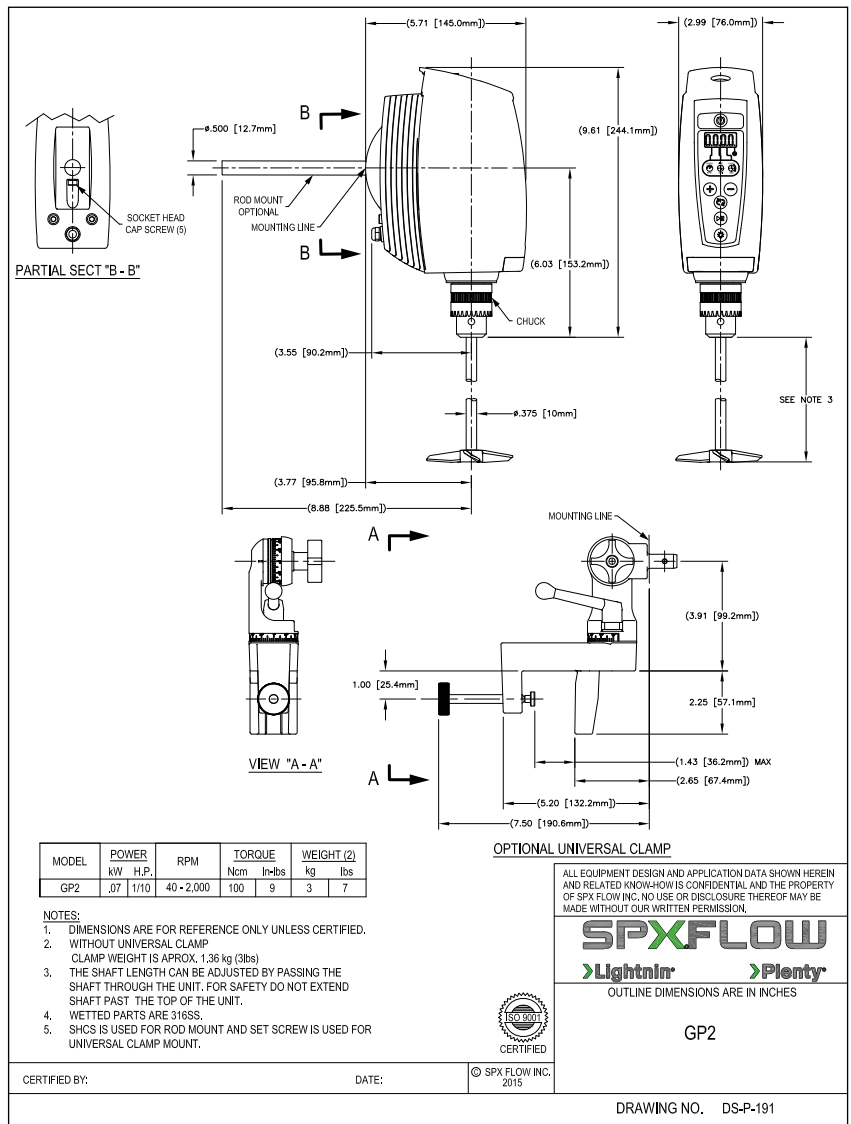
Speed	40 - 2000 rpm
Mechanical Power	0.07Kw / 0.1HP
Torque	100 Ncm / 9 in-lbs.
Input Power to Power Supply	Universal Single Phase 115V / 230V; 50 / 60 Hz
Electrical Power to Mixer	24V DC, 4.75A, 90W
Weight	3Kg / 7 Lbs
LED Accuracy Display	± 1 rpm or 3% of reading (whichever is greater)
Modes	Countdown Timer, Clockwise, Counter Clockwise, xRx Mixing - Auto Reversing
Approvals/ Environmental	UL, CSA, CE, RoHS, WEEE Compliant, IP42 rating
Standard Equipment	Stainless Steel Chuck, Chuck key, 5" Mounting post, Power cord and operating instructions.
Standard Equipment (Non-Retrofit Models)	Mounting system (excluding stand and clamp), 10mm (3/8") stainless steel shaft, A310 Ø64mm (Ø2.5") and A310 86mm (3.4") impellers
Spares/Accessories	Full range of spares and accessories



**GP2 Rod Mount**



**GP2 Universal Clamp Mount**



**AUSTRALIAN DISTRIBUTOR**



**CALL 1300 789 466**

*When Pump Knowledge Matters*  
[www.kelairpumps.com.au](http://www.kelairpumps.com.au)

**SPXFLOW**

**SPX FLOW, INC - LIGHTNIN & PLENTY MIXERS**

135 Mt. Read Blvd., Rochester, NY 14611

P: +1 (888) 649-2378 (MIX-BEST), (US and Canada) or +1 (585) 436-5550

E: [lightnin@spxflow.com](mailto:lightnin@spxflow.com) ▪ [www.spxflow.com/lightnin](http://www.spxflow.com/lightnin)

SPX FLOW, Inc. reserves the right to incorporate our latest design and material changes without notice or obligation. Design features, materials of construction and dimensional data, as described in this bulletin, are provided for your information only and should not be relied upon unless confirmed in writing. Please contact your local sales representative for product availability in your region. For more information visit [www.spxflow.com](http://www.spxflow.com). The green "X" and "X" are trademarks of SPX FLOW, Inc.