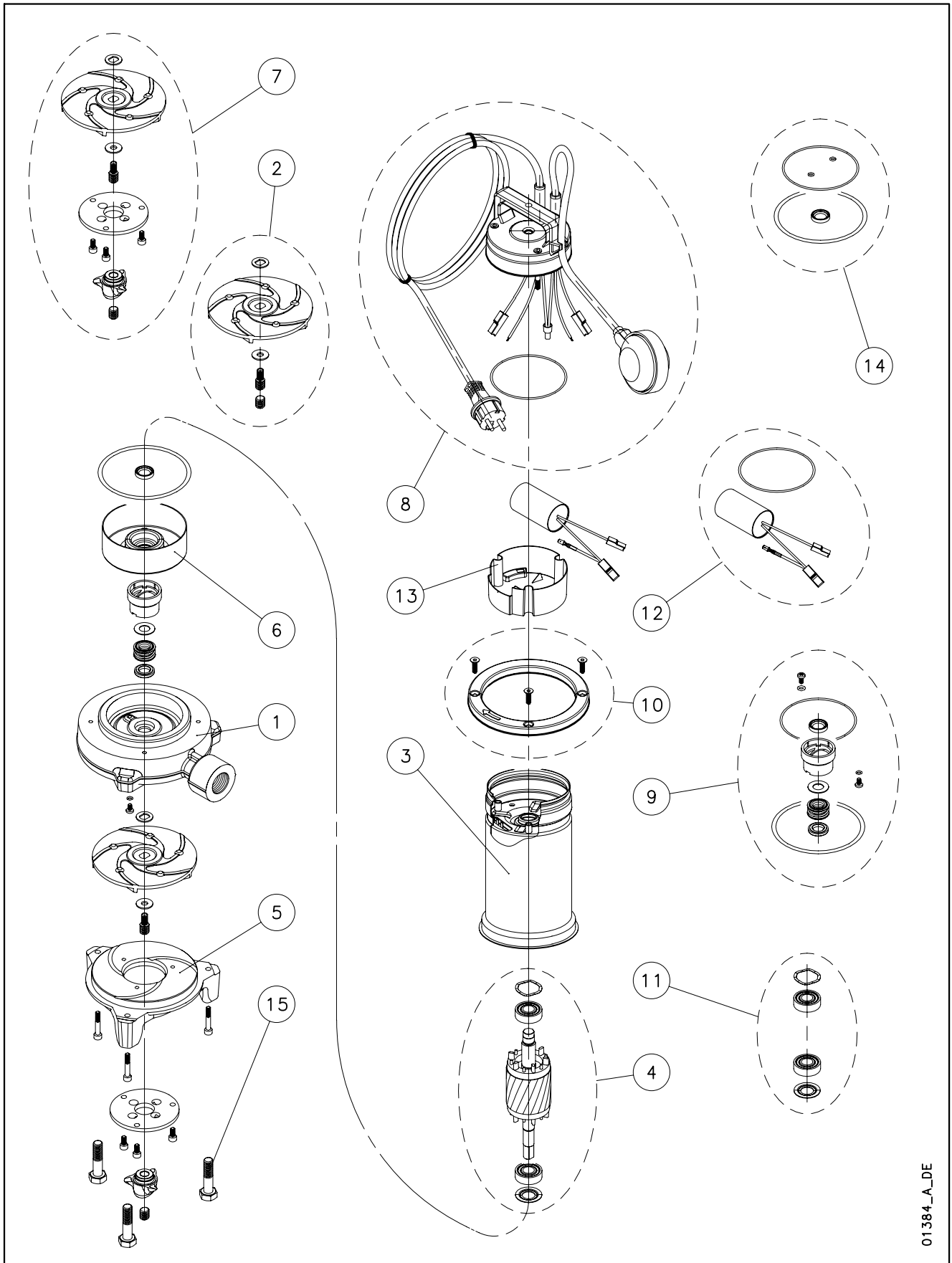


## DOMO GRI - DXG



01384\_A\_DE

N.	Descrizione it	Description en	Description fr	Beschreibung de	Descripción es	Descrição pt
1	Corpo pompa	Pump casing	Corps de pompe	Pumpengehäuse	Caja bomba	Corpo da bomba
2	Girante	Impeller	Roue	Laufrad	Rodete	Impulsor
3	Cassa motore / Statore	Motor case / Stator	Carcasse moteur/Stator	Motorgehäuse/Stator	Caja motor/Estator	Caixa motor/Estator
4	Albero rot. con cuscinetti	Shaft with bearings	Arbre avec roulements	Welle mit Lagern	Eje con cojinetes	Veio com rolamentos
5	Coperchio aspirazione	Suction cover	Couvercle d'aspiration	Abdeckung	Tapa de aspiración	Tampa de aspiração
6	Supporto inf. cuscinetto	Lower bearing support	Support inférieur roulements	Lager Untere Lagerung	Soporte inferior cojinetes	Suporte inferior rolamentos
7	Taglienti / Girante	Cutter / Impeller	Broyeur / Roue	Schneid / Laufrad	Corte / Rodete	Trituradora / Impulsor
8	Coperchio superiore + cavo + OR	Upper cover + cable + o-ring	Couvercle supérieur +joint + câble	Obere Abdeckung + Kabel + O-Ring	Tapa superior + cable + junta tórica	Tampa superior +OR+cabo
	Coperchio superiore + galleggiante + cavo + OR	Upper cover /Float switch + cable + o-ring	Couvercle supérieur / Flotteur +joint + câble	Obere Abdeckung / Schwimmerschalter + Kabel + O-Ring	Tapa superior + flotador + cable + junta tórica	Tampa superior / Flutuador + OR + cabo
9	Kit tenuta mecc. + OR	Mechanical seal + OR kit	Kit garniture méc. + joints toriques	Gleitringdichtung + OR	Kit sello mecánico + junta tórica	Kit vedante mecanico + OR
10	Anello bloccaggio	Stop ring	Anneau arrêt	Anschlagring	Anillo parada	Anel paragem
11	Cuscinetti	Bearings	Roulements	Lagers	Cojinetes	Rolamentos
12	Condensatore + OR	Capacitor + OR	Condensateur + joint	Kondensator + OR	Condensador + junta	Condensador + OR
13	Protezione collegamenti	connection protection	Prot. connexions	Schutzabdeckung	Protección conexiones	Cobertura ligações
14	Kit O-Rings	O ring kit	Kit joints toriques	O-Ring-Dichtungssatz	Kit juntas tóricas	Kit guarnições OR
15	Viti Piedini	Feet screws	Vis pieds d'appui	Schrauben Stützfuß	Tornillos pie de soporte	Parafusos pé de apoio
N.	Beschrijving nl	Περιγραφή el	Açıklama tr	Kuvaus fi	Описание ru	Opis pl
1	Pomphuis	Πλήρες αντλίας	Pompa gövdesi	Pumpun runko	корпус насоса	Korpus pompy
2	Waaier	Πτερύγιο	Pompa çarkı	Juoksupyörä	Рабочее колесо	Wirnik
3	Motorhuis/Stator	Στάτης κινητήρα/Στάτορας	Motor karteri/Statör	Moottorin kotelo/Staattori	Корпус двигателя/Статор	Obudowa silnika/Kierownica
4	As met lagers	Σετ άξονα με ρουλεμάν	Rulmanlı mil	Akseli ja laakerit	Вал с подшипниками	Wał z łożyskami
5	Aanzuigkap	Καπάκι αναρρόφησης	Emme borusu kapađı	Imulaippa	Крышка всасывания	Pokrywa ssania
6	Steu voor lager	Φορέας κάτω ρουλεμαν	Rulmanin alt desteđi	Avustus kuulalaakeri	Нижняя опора подшипника	Dolny wspornik łożyska
7	Mes / Waaier	τριβείο / Πτερύγιο	Bıçak / Pompa çarkı	Repijae / Juoksupyörä	Резка / Рабочее колесо	Nóż / Wirnik
8	Bovenste kap + kabel + O-ring	Επάνω Κάλυμμα + καλώδιο + O-ring	Üst kapak + O-Ring + kablo	Yläkansi O-renga + suojus	Верхняя крышка + кабель+ OR	Pokrywa górna + OR + kabel
	Bovenste kap + vlotter + kabel + O-ring	Επάνω Κάλυμμα + πλωτήρας + καλώδιο + O-ring	Üst kapak / Flatör + O-Ring + kablo	Yläkansi / Kellua O-renga + suojus	Верхняя крышка + поплавок + кабель + OR	Pokrywa górna + Pływak + OR + kabel
9	Set mech. asafdichting + O-ring	Μηχανικός στυπιοθλίπτης και ροδέλες στεγανοποίησης	Mekanik salmastra kiti + O-Ring	Mek. tiiviste + O-rengassarja	Комплект мех.прокладки + OR	Zestaw uszcz.mech. + OR
10	Borgring	Δακτύλιος ασφάλισης	Durdurma halkası	Lukkorengas	Блокировочное кольцо	Pierścień blokujący
11	Lagers	Ρουλεμάν	Rulmanlar	Laakerit	Подшипники	łożyska
12	Condensator +O-ring	πυκνωτής + στεγανοποίησης	Kondansatör + O-Ring	kondensaattori +O-renga	Конденсатор + OR	Kondensator + OR
13	Afscherming aansluitingen	Προστασία συνδέσεων	Bađlantı koruma	Kaapelin jatkoyhteys	Защита соединений	Oslona połączeń
14	Set O-ringafdichtingen	Σετ ροδέλες στεγανοποίησης	O-Ring kiti	O-rengassarja	Комплект кольцевых прокладок OR	Zestaw uszczeltek OR
15	Schroeven voeten	Βίδες Ποδιών	Destek ayaklarının vidaları	Tukijalka	Винты ножек	Śruby nóżek

## DOMO GRI

Elp 2P		DOMOGRI 11	DOMOGRI 11 UK	DOMOGRI 11- SG	DOMOGRI 11- SG UK	DOMOGRI 11T	DOMOGRI 11T	SG = Without Float Switch
230V		107679010	107679011	107679000	107679001		107679006	
400V						107679005		
kW ->		1,1	1,1	1,1	1,1	1,1	1,1	

### Single Unit and Kit

3	Motor case /Stator 230V	KL25ABZ	KL25ABZ	KL25ABZ	KL25ABZ		KL25ABX	
	Motor case /Stator 400V					KL25ABY		
4	Rotor shaft with Bearings	KL09ABT	KL09ABT	KL09ABT	KL09ABT	KL09ABS	KL09ABS	
8	KIT Upper cover/Cable + O-ring			KL18AAC	KL18AAE		KL18AAA	Cable H07RN-F 10 mt
8	KIT Upper cover/Float /Cable + O-ring	KL18AAB	KL18AAD					Cable H07RN-F 10 mt

### Common Kit

*2	KIT impeller	KL04AL6	
*7	KIT cutter / impeller	KL57AAA	Cutter A440 made
*9	KIT mechanical seal + OR	KL01AA7	Mech Seal D14 Q1Q1PGG
10	Stop ring	KL20AAE	Screws A304 M6X35 N.3
*11	KIT ball bearings 6202	KL11AAR	
12	KIT Capacitor 30UF + OR	KL28AAR	
*14	KIT O-rings	KL02ABE	

### Common Single Unit

1	Pump casing	161353840	
5	Suction cover	161353850	
6	Lower bearing support	161403716	
13	Protection el. connection	164260716	
15	Screw feet	002611147	Screws A304 M12X50 N.3

\* Recommended spare parts

DOMO GRI -DXG 5 Apr08 EdB

**DXG 25**

Elp 2P		DXG 25-11	DXGM 25-11UK	DXGM 25-11SG	DXGM 25-11SG UK	DXG 25-11T	DXG 25-11T	SG = Without Float Switch
230V	107679110	107679111	107679100	107679101		107679106		
400V					107679105			
kW ->		1,1	1,1	1,1	1,1	1,1	1,1	

**Single Unit and Kit**

3	KIT mot case Stator 230V	KN25ABZ	KN25ABZ	KN25ABZ	KN25ABZ		KN25ABX	
	KIT mot case Stator 400V					KN25ABY		
4	KIT Rotor shaft/Bearings	KL09ABT	KL09ABT	KL09ABT	KL09ABT	KL09ABS	KL09ABS	
8	KIT Upper cover/Cable + O-ring			KN18AAC	KN18AAE		KN18AAA	Cable H07RN-F 10 mt
8	KIT Upper cover/Float /Cable + O-ring	KN18AAB	KN18AAD					Cable H07RN-F 10 mt

**Common Kit**

*2	KIT impeller	KL04AL6	
*7	KIT cutter / impeller	KL57AAA	Cutter A440
*9	KIT mechanical seal + OR	KL01AA7	Mech Seal D14 - Q1Q1PGG
10	Stop ring	KL20AAE	Screws A304 M6X35 N.3
*11	KIT ball bearings 6202	KL11AAR	
12	KIT Capacitor 30UF + OR	KL28AAR	
*14	KIT O-rings	KL02ABE	

**Common Single Unit**

1	Pump casing	161353840	
5	Suction cover	161353850	
6	Lower bearing support	161403716	
13	Protection el. connection	164260716	
15	Screw feet	002611147	Screws A304 M12X5CN.3