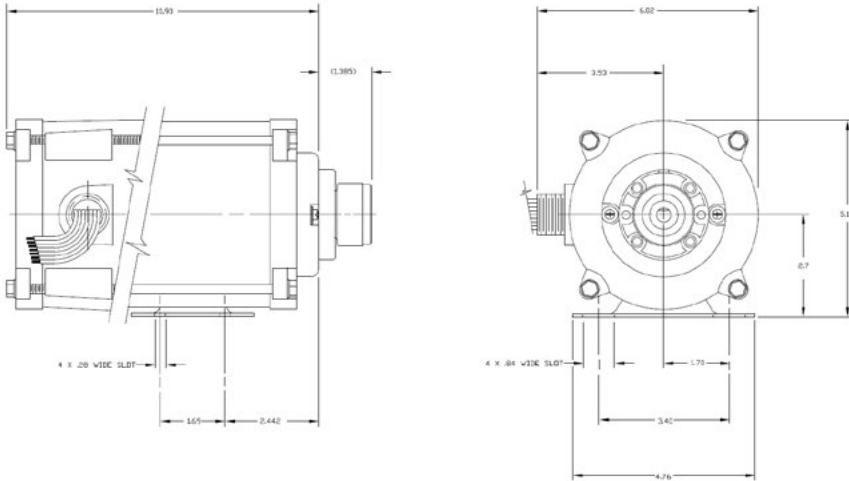
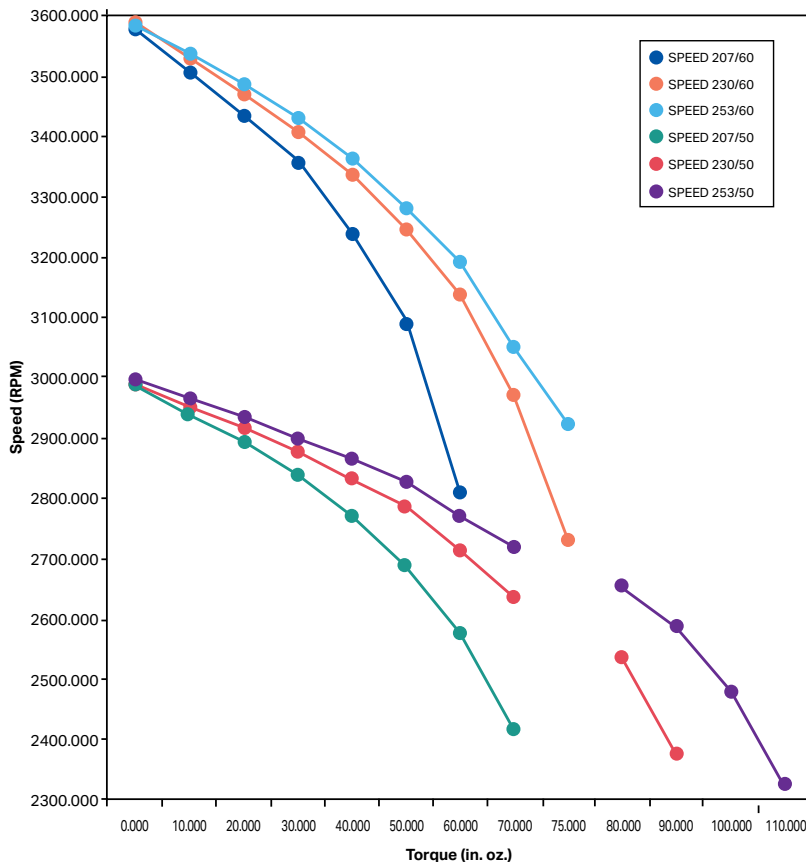


MODEL DN-519.A DRIVE



AVERAGE TESTED PERFORMANCE

Speed vs. Torque



MOTOR SPECIFICATIONS

TYPE

- Permanent split capacitor explosion proof motor; enclosure U.L. Listed for Class 1, Groups C and D.

VOLTAGE

- 115/230 V.A.C., 50/60 HZ.

RATED AMPERAGE LOADED

- 1.8/1.9 @ 115/230 V.A.C. Respectively

TORQUE

- 34.56 IN. OZ. @ 3350 R.P.M. (60 HZ.)
- 64.0 IN. OZ. @ 3150 R.P.M. (60 HZ.)
- N/A IN. OZ. @ Stall (60 HZ.)

HORSEPOWER

- 1/6TH

ROTATION

- Clockwise, shaft end.
- Shaft is in fully extended position. Shaft end play is .020 Max.

BEARINGS

- Sealed, Ball Bearings.

INSULATION

- Class B

LEAD DATA

- Length: 6" ± 1", Measured from end of conduit nipple, neoprene insulation – to 135°C Max.

OVERLOAD

- Thermally protected 130°C.

FRAME

- NEMA #42

TEMPERATURE RISE

- 75°C @ Max. Load 3150 R.P.M. (60 HZ.)

WIRING CONNECTIONS

115 VAC	230 VAC
1 _____	1 _____ Line – 1
3 _____ Line – 1	
8 _____	
4 _____ Line – 2	4 _____ Line – 2
2 _____	2 _____
J _____ INS.	3 _____ INS.
5 _____	8 _____
Green _____ GND.	5 _____
	J _____ INS.
	Green _____ GND.
C.W.S.E.	C.W.S.E.
Leads: 6.0 IN. Long	

AUSTRALIAN DISTRIBUTOR

MICROPUMP

ACTUAL PERFORMANCE MAY VARY. Specifications are subject to change without notice.



CALL 1300 789 466
When Pump Knowledge Matters
www.kelairpumps.com.au